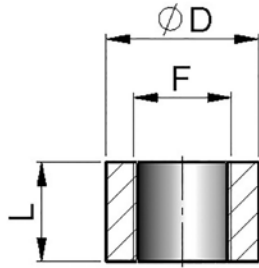


295



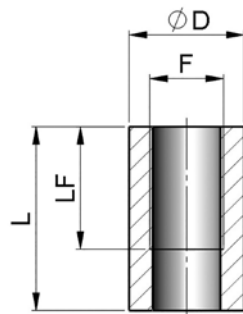
Bestellnummer	F / BSP	L	øD	kg x 100
295 101 015	1/8"	14	20	2,80
295 102 013	1/4"	13	22	2,80
295 102 016	1/4"	16	22	3,50
295 103 015	3/8"	15	26	4,20
295 103 017	3/8"	17	26	4,70
295 104 018	1/2"	18	30	6,10
295 105 020	3/4"	20	38	10,50
295 106 025	1"	25	45	16,90
295 107 024	1 1/4"	24,5	55	22,60
295 108 030	1 1/2"	30	60	28,90
295 109 030	2"	30	70	30,70

MATERIAL: STAHL 355J2C

Bestellnummer	F / BSP	L	øD	kg x 100
295 M12 016	M12x1,5	16	22	3,70
295 M14 014	M14x1,5	14	22	2,80
295 M14 016	M14x1,5	16	22	3,20
295 M16 017	M16x1,5	17	26	4,90
295 M18 014	M18x1,5	14	28	4,40
295 M18 018	M18x1,5	18	28	5,70
295 M20 018	M20x1,5	18	30	6,10
295 M22 018	M22x1,5	18	30	5,30

MATERIAL: STAHL 355J2C

295



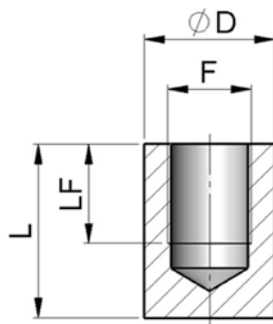
Bestellnummer	F / BSP	LF	L	øD	kg x 100
295 102 040	1/4"	27	40	22	8,60
295 103 042	3/8"	28	42	26	11,70
295 104 048	1/2"	33	48	30	16,30

MATERIAL: STAHL 355J2C

Bestellnummer	F / BSP	LF	L	øD	kg x 100
295 M16 040	M16x1,5	28	40	22	6,80
295 M18 042	M18x1,5	30	42	26	10,50
295 M22 030	M22x1,5	35	50	30	14,80

MATERIAL: STAHL 355J2C

295



Bestellnummer	F / BSP	LF	L	øD	kg x 100
295 102 030	1/4"	13	30	22	7,30
295 103 035	3/8"	20	35	26	10,70
295 104 035	1/2"	22	35	30	13,80

MATERIAL: STAHL 355J2C

Bestellnummer	F / BSP	LF	L	øD	kg x 100
295 M16 030	M16x1,5	14	30	22	6,00
295 M18 035	M18x1,5	16	35	26	10,40
295 M22 035	M22x1,5	18	35	30	12,30

MATERIAL: STAHL 355J2C